

CATERHAM SCHOOL
PARENTS' ASSOCIATION
2021 - 2022

PA AGM

Cheese & Wine



October

Fireworks

The PA run the sweet stall, glow stick stall and the Bar!



November

Drinks for the Old Cats Rugby & Lacrosse matches



November

PA Christmas Dinner Dance at Surrey National Golf Club

November





PA Mulled Wine before the drama production of 'My Fair Lady'

December





PA Quiz Night

Written by
Erika James,
hosted by
Stuart Terrell,
again!

March

Look at those
prizes!





Winner of Heads & Tails Game



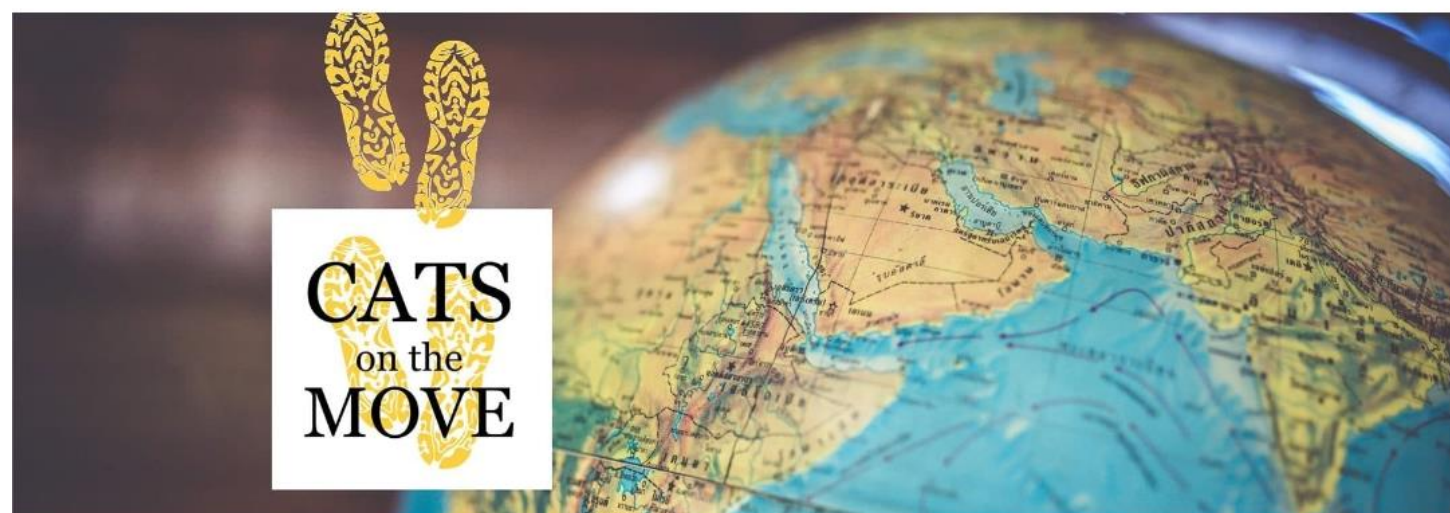
Winners of the
Wooden Spoon....

....for gaining the
least points....





Winners



To Hong Kong

Cats on the Move 2022 Can we get to Hong Kong and back by 16th February?

Distance between Caterham School and Hong Kong and back – 19,234km

Distance travelled in week 1 923.05km

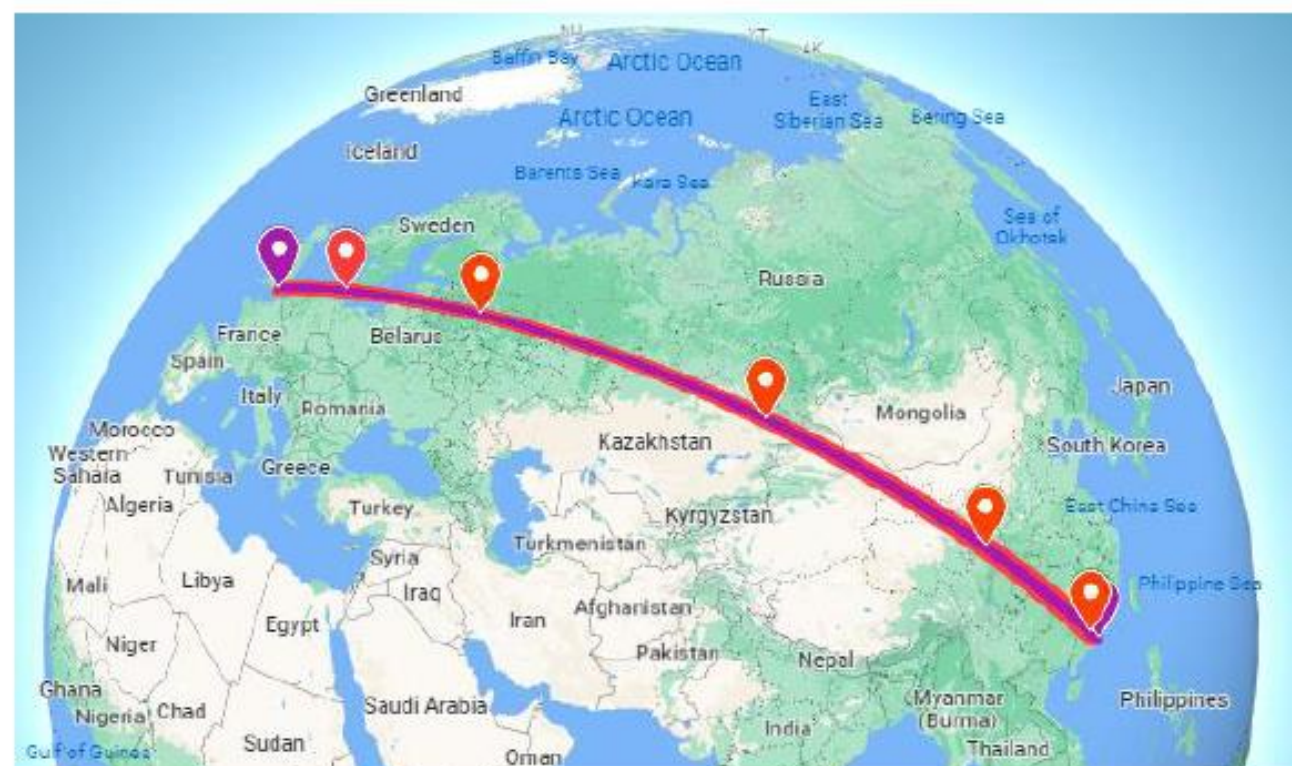
Distance travelled in week 2 1,589.06km

Distance travelled in week 3 2,985.98km

Distance travelled in week 4 2,507.09km

Distance travelled in week 5 1,522.85km

Total distance = 9,528.03km 89km short of Hong Kong



Giving Day 'Cats on the Move'

Cats on the Move 2022 to Tanzania

Can we get to Lerang'Wa School in Tanzania by 17th March? **YES!**

Distance between Caterham School and Lerang'Wa – 6,979km

Distance travelled in week 1 2,078.33km

Distance travelled in week 2 1,914.64km

Distance travelled in week 3 3,241.019km

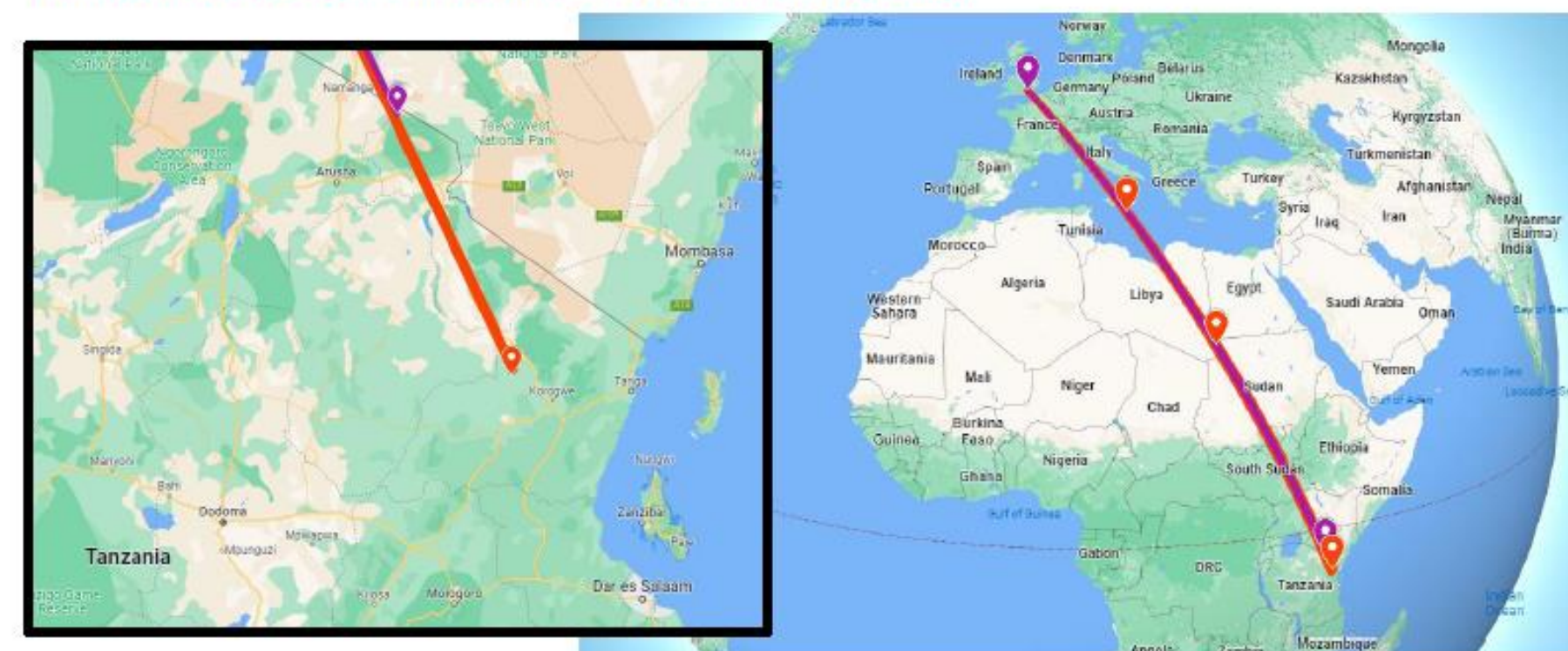
Total distance = 7,233.989km

We travelled 255km further than Lerang'Wa School as the crow flies

We travelled to within 240km from Dar es Salaam on the coast of the Indian Ocean

Well done everyone – Mission completed a week earlier than expected!

- CRS 6YA
- Lerang'Wa School (Tanzania)
- Destination
- Total distance so far
- 2078.33km week 1
- 1914.64km week 2
- 3241.019km week 3



To Tanzania

March

Prep Spring Fair



March

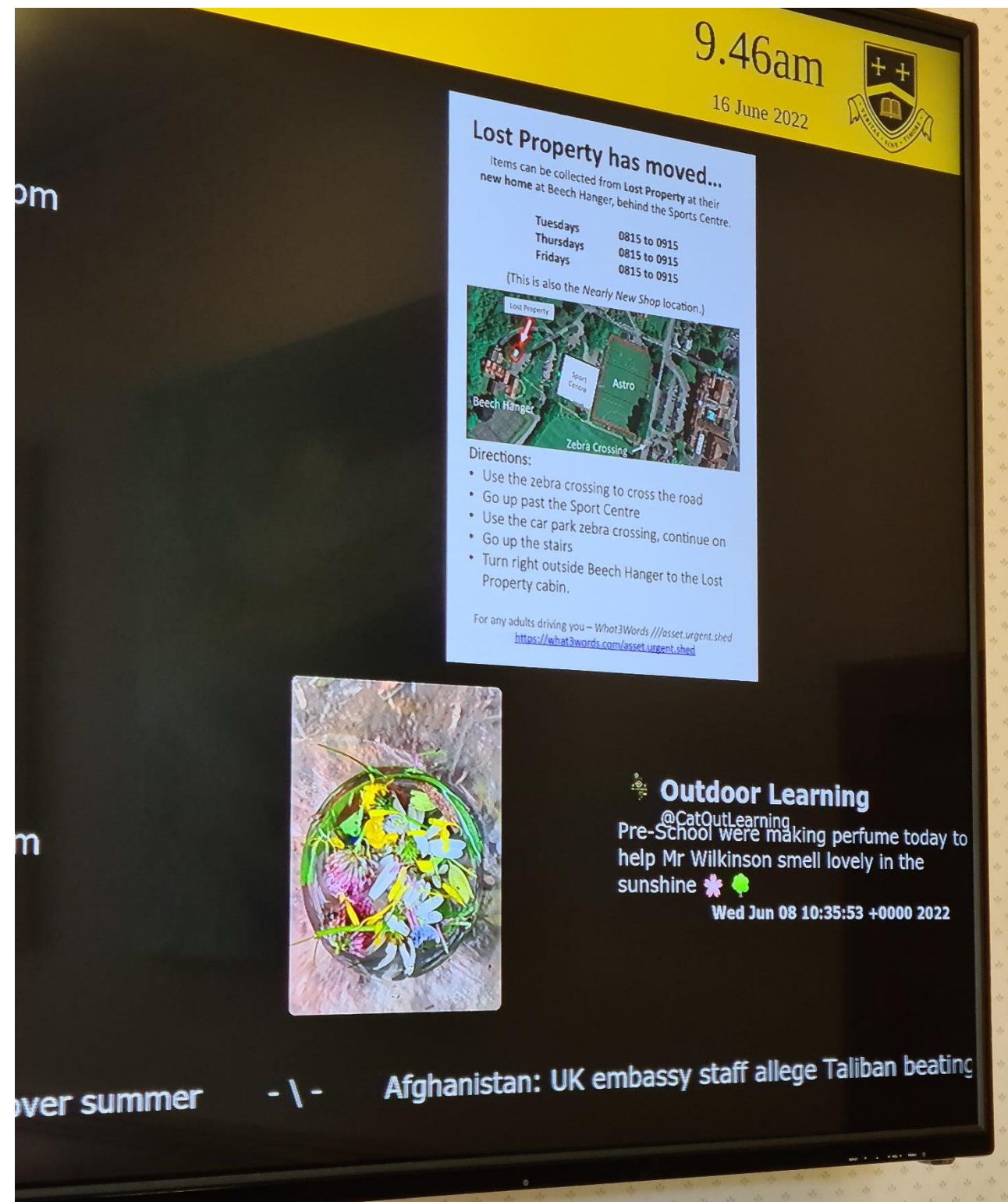






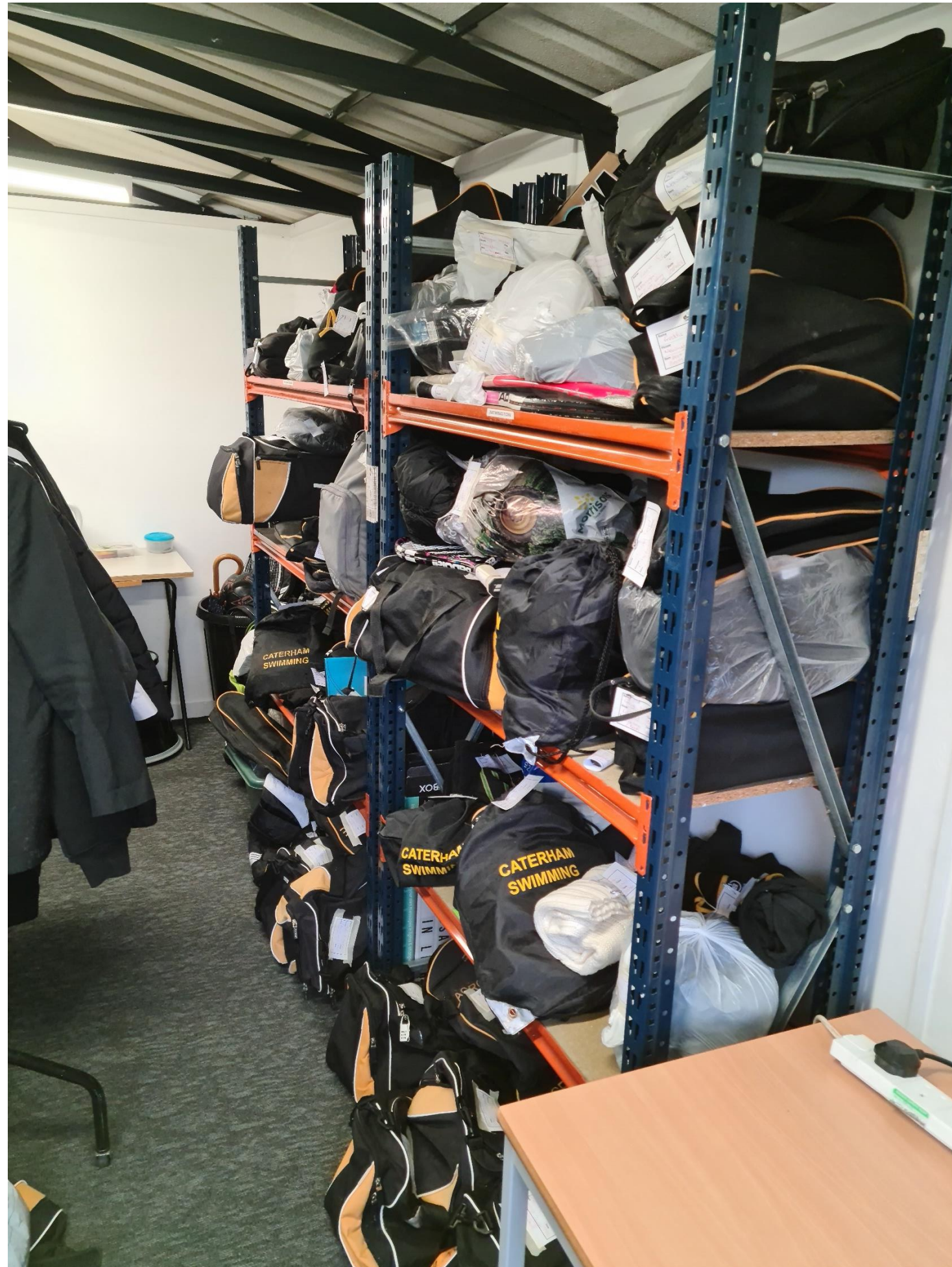


NNU & LP Relocation



May

So many
bags.....



PA Lost
Property





Items found in the 6th
form cupboard.... Some
from 2021 leavers.....





10/6/22
ALDERCOMBE

Area	Waste Type	Waste Code	Waste Weight
Albercombe	General Waste	Waste Code 1	Waste Weight 1
Albercombe	General Waste	Waste Code 2	Waste Weight 2
Albercombe	General Waste	Waste Code 3	Waste Weight 3
Albercombe	General Waste	Waste Code 4	Waste Weight 4
Albercombe	General Waste	Waste Code 5	Waste Weight 5
Albercombe	General Waste	Waste Code 6	Waste Weight 6
Albercombe	General Waste	Waste Code 7	Waste Weight 7
Albercombe	General Waste	Waste Code 8	Waste Weight 8
Albercombe	General Waste	Waste Code 9	Waste Weight 9
Albercombe	General Waste	Waste Code 10	Waste Weight 10

HARESTONE

Area	Waste Type	Waste Code	Waste Weight
Harestone	General Waste	Waste Code 1	Waste Weight 1
Harestone	General Waste	Waste Code 2	Waste Weight 2
Harestone	General Waste	Waste Code 3	Waste Weight 3
Harestone	General Waste	Waste Code 4	Waste Weight 4
Harestone	General Waste	Waste Code 5	Waste Weight 5
Harestone	General Waste	Waste Code 6	Waste Weight 6
Harestone	General Waste	Waste Code 7	Waste Weight 7
Harestone	General Waste	Waste Code 8	Waste Weight 8
Harestone	General Waste	Waste Code 9	Waste Weight 9
Harestone	General Waste	Waste Code 10	Waste Weight 10

NEWINGTON

Area	Waste Type	Waste Code	Waste Weight
Newington	General Waste	Waste Code 1	Waste Weight 1
Newington	General Waste	Waste Code 2	Waste Weight 2
Newington	General Waste	Waste Code 3	Waste Weight 3
Newington	General Waste	Waste Code 4	Waste Weight 4
Newington	General Waste	Waste Code 5	Waste Weight 5
Newington	General Waste	Waste Code 6	Waste Weight 6
Newington	General Waste	Waste Code 7	Waste Weight 7
Newington	General Waste	Waste Code 8	Waste Weight 8
Newington	General Waste	Waste Code 9	Waste Weight 9
Newington	General Waste	Waste Code 10	Waste Weight 10

LEWISHAM

Area	Waste Type	Waste Code	Waste Weight
Lewisham	General Waste	Waste Code 1	Waste Weight 1
Lewisham	General Waste	Waste Code 2	Waste Weight 2
Lewisham	General Waste	Waste Code 3	Waste Weight 3
Lewisham	General Waste	Waste Code 4	Waste Weight 4
Lewisham	General Waste	Waste Code 5	Waste Weight 5
Lewisham	General Waste	Waste Code 6	Waste Weight 6
Lewisham	General Waste	Waste Code 7	Waste Weight 7
Lewisham	General Waste	Waste Code 8	Waste Weight 8
Lewisham	General Waste	Waste Code 9	Waste Weight 9
Lewisham	General Waste	Waste Code 10	Waste Weight 10

UNDERWOOD

Area	Waste Type	Waste Code	Waste Weight
Underwood	General Waste	Waste Code 1	Waste Weight 1
Underwood	General Waste	Waste Code 2	Waste Weight 2
Underwood	General Waste	Waste Code 3	Waste Weight 3
Underwood	General Waste	Waste Code 4	Waste Weight 4
Underwood	General Waste	Waste Code 5	Waste Weight 5
Underwood	General Waste	Waste Code 6	Waste Weight 6
Underwood	General Waste	Waste Code 7	Waste Weight 7
Underwood	General Waste	Waste Code 8	Waste Weight 8
Underwood	General Waste	Waste Code 9	Waste Weight 9
Underwood	General Waste	Waste Code 10	Waste Weight 10

RIDGEFIELD

Area	Waste Type	Waste Code	Waste Weight
Ridgefield	General Waste	Waste Code 1	Waste Weight 1
Ridgefield	General Waste	Waste Code 2	Waste Weight 2
Ridgefield	General Waste	Waste Code 3	Waste Weight 3
Ridgefield	General Waste	Waste Code 4	Waste Weight 4
Ridgefield	General Waste	Waste Code 5	Waste Weight 5
Ridgefield	General Waste	Waste Code 6	Waste Weight 6
Ridgefield	General Waste	Waste Code 7	Waste Weight 7
Ridgefield	General Waste	Waste Code 8	Waste Weight 8
Ridgefield	General Waste	Waste Code 9	Waste Weight 9
Ridgefield	General Waste	Waste Code 10	Waste Weight 10



So busy....

PA Nearly New
Uniform



Happy Circus



May







PA Pimm's Night



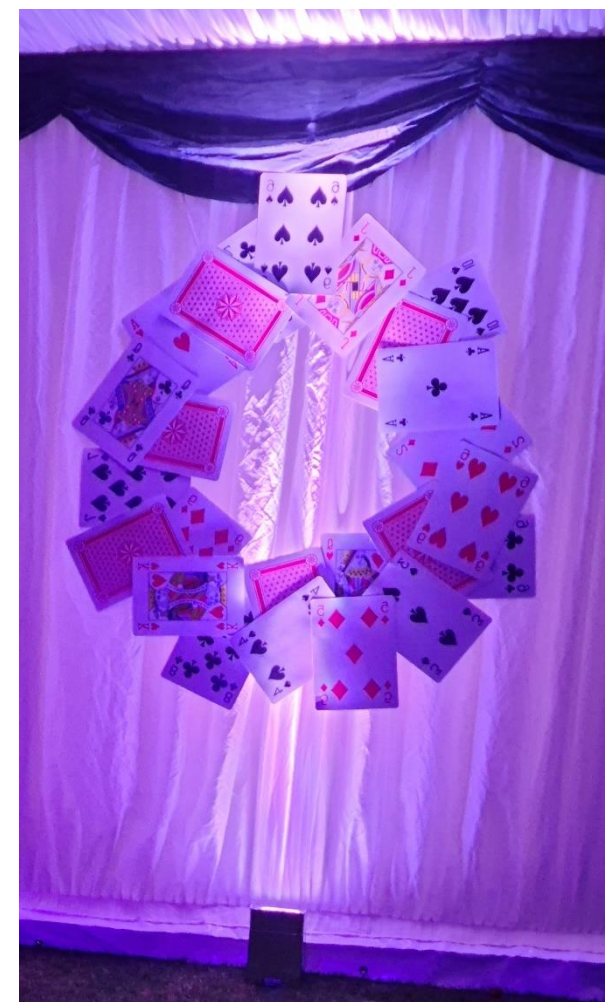
June



Mr. Jones' Thank You Supper



June



PA Summer Ball



Casino Night

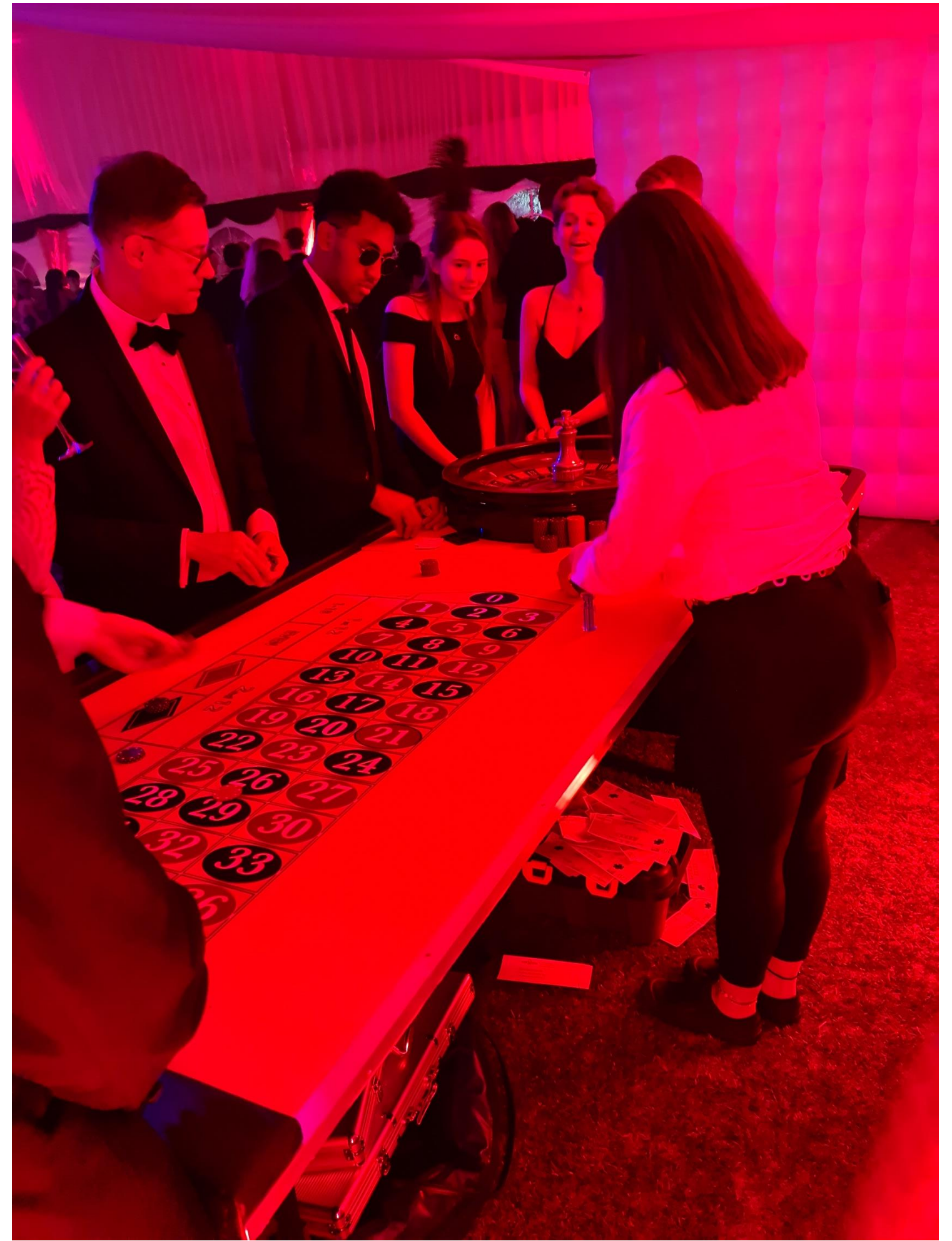
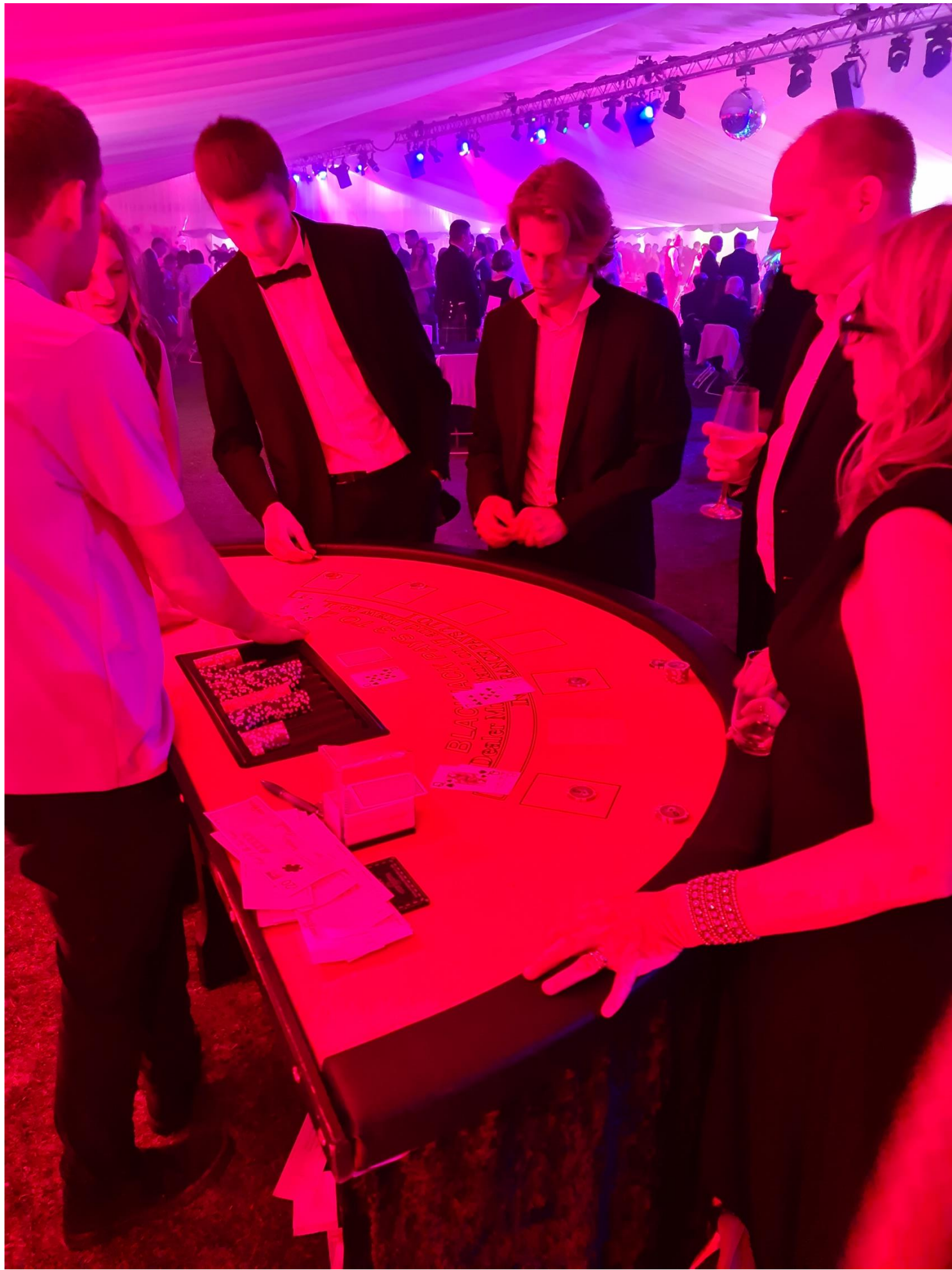
July





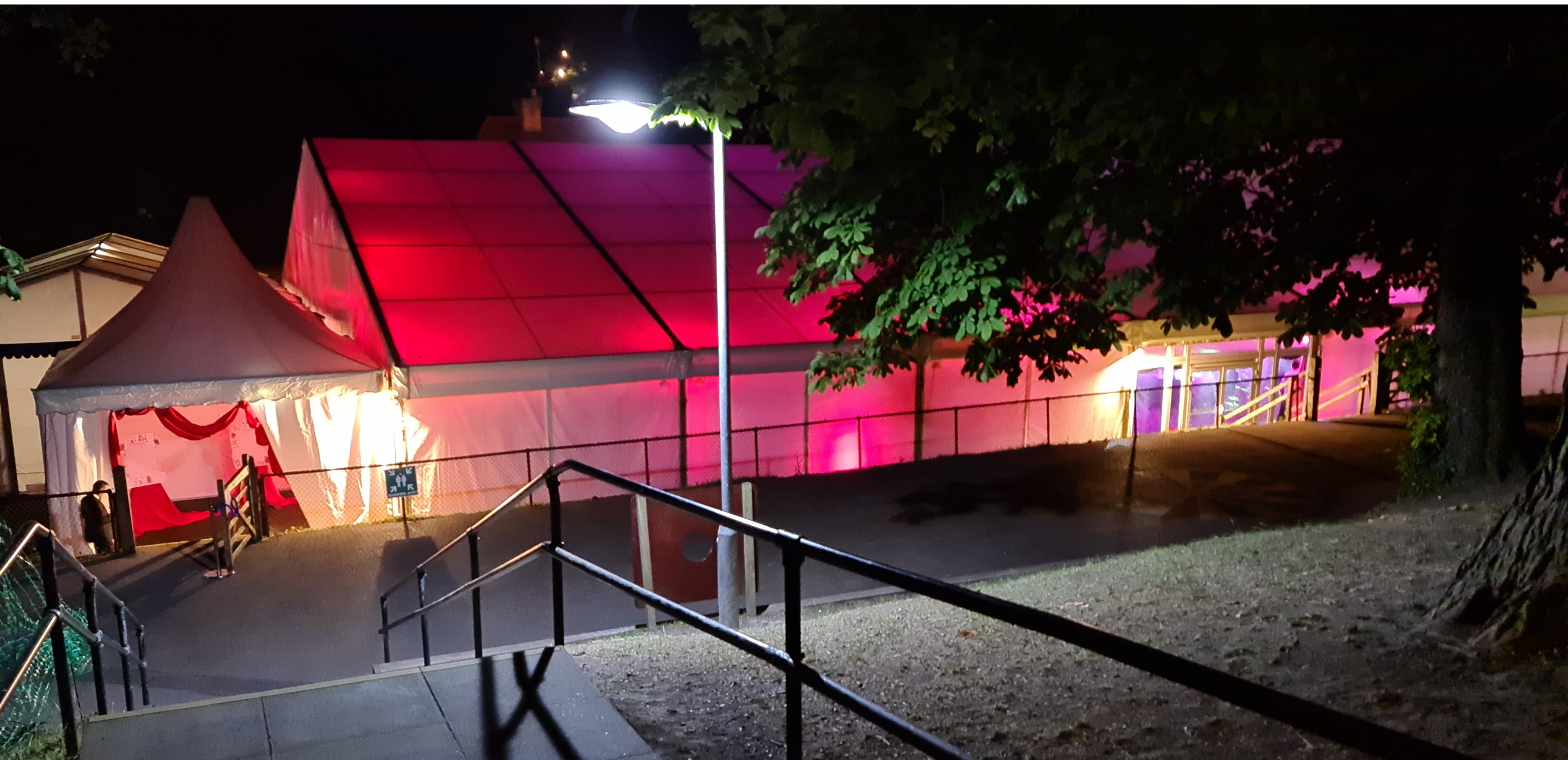












PA Leavers Bags



July

PA Welcome Bags



September



CATERHAM SCHOOL
PARENTS' ASSOCIATION

PA Purchases



Green Car



Getting ready for the first race

New benches



Two benches for Home Field,
maybe some picnic benches too



CATERHAM SCHOOL
PARENTS' ASSOCIATION

Our Chosen Charities



I Choose Freedom

formally Reigate and Banstead
Women's Aid



We donated
£5,000.00 to help
them provide
welcome packs in
their new refuge.

Sal's Shoes

We donate £1 for every pair of shoes donated at school.



1811 Circle

We have donated £1,811
every year to part fund a
transformational
bursary place





CATERHAM SCHOOL
PARENTS' ASSOCIATION

Going forward

Coming next

Bag2School Collection

CC Fireworks Night Stalls

Christmas Prep Fair

Christmas Dinner & Dance

PA Christmas Afternoon Tea

PA Fawlty Towers Dining Experience

PA Summer Ball

TBC

Saturday 12th November 2022

Saturday 26th November 2022

Saturday 26th November 2022

Friday 9th December 2022

Saturday 4th February 2023

Saturday 8th July 2023